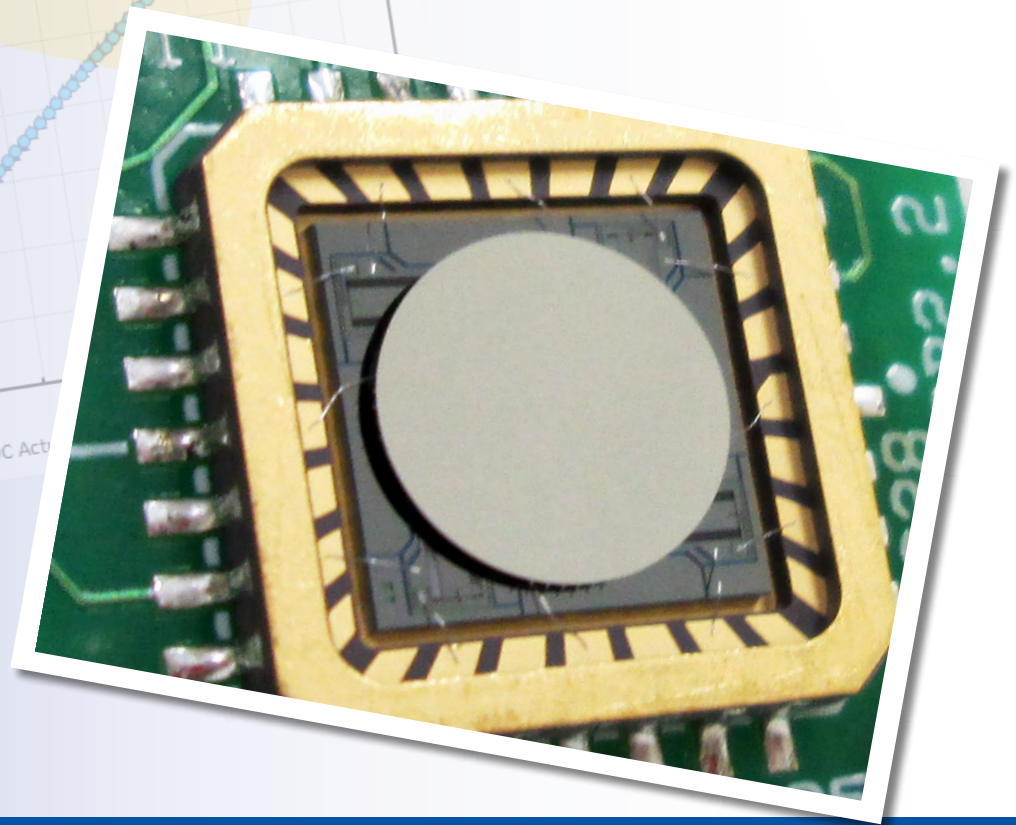
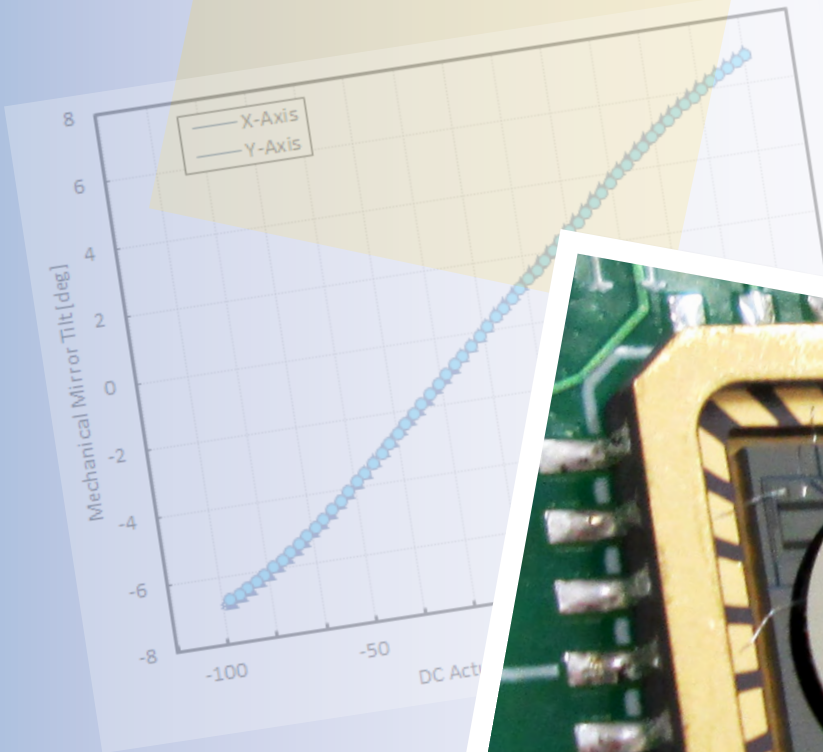


## Gimbal-Less Two-Axis Scanning MEMS Micromirrors

Device Datasheet  
S7644



---

# Device Parameters Summary

**Device ID** : S7644

**Actuator Type**: A3I8.2

**Actuator Mode** : Gimbal-less Dual-Axis Quasistatic

**Mirror Type and Size** : Integrated mirror of 800um diameter

**Mirror Coating** : Aluminum

**Maximum Mech. Angle - X Axis [degrees]** : 6.1093

**Maximum Mech. Angle - Y Axis [degrees]** : 6.1661

**Maximum Vdifference - X Axis [V]** : 98

**Maximum Vdifference - Y Axis [V]** : 97

**Driver Bias Voltage (Vbias) [V]** : 80

**Maximum Mech. Angle - Coupled Axes [degrees]** : 7.8375

**Resonant Frequency - X Axis [Hz]** : 3916

**Resonant Frequency - Y Axis [Hz]** : 3828

**Quality Factor - X Axis** : 53

**Quality Factor - Y Axis** : 50

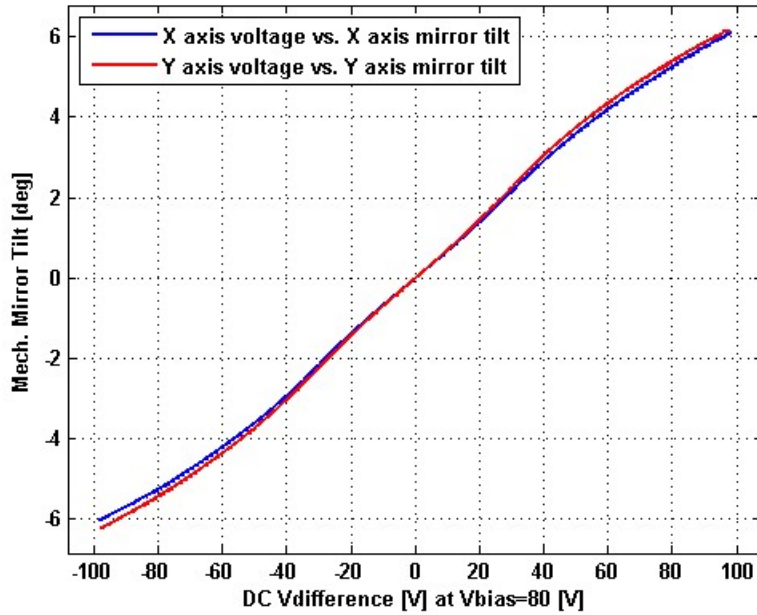
**Recommended LPF Cutoff Frequency (6th Order Bessel) [Hz]** : 1000

**Date and Time Report was Created**: 02-Feb-2018 at 12:30:26

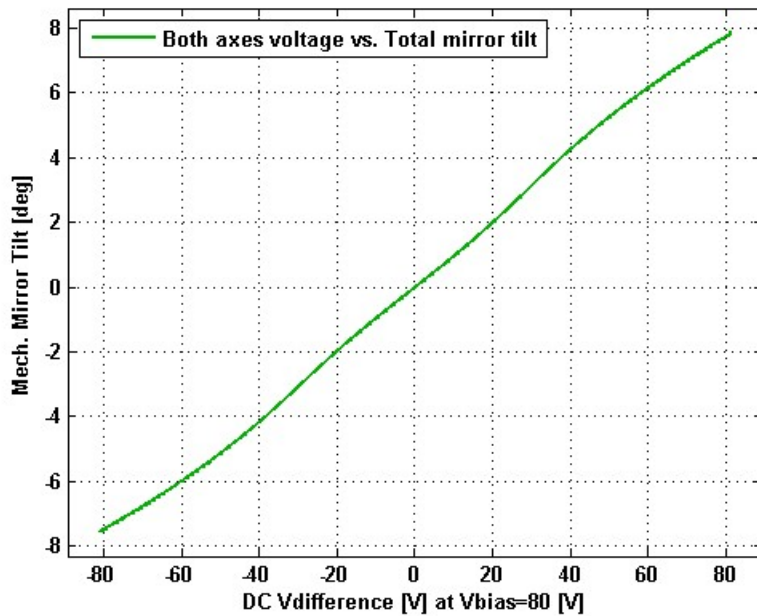
---

# Static Response

## Voltage vs. Mech. Angle - Individual Axes

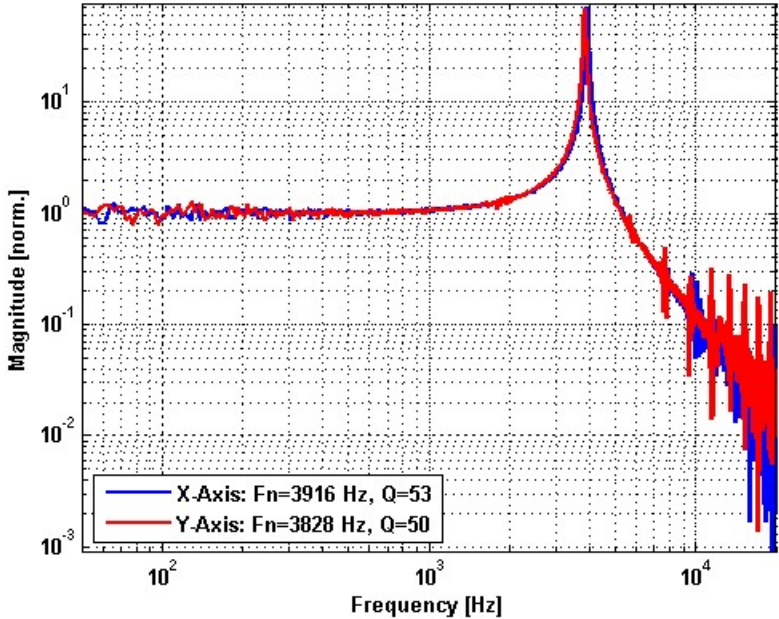


## Voltage vs. Mech. Angle - Coupled Axes

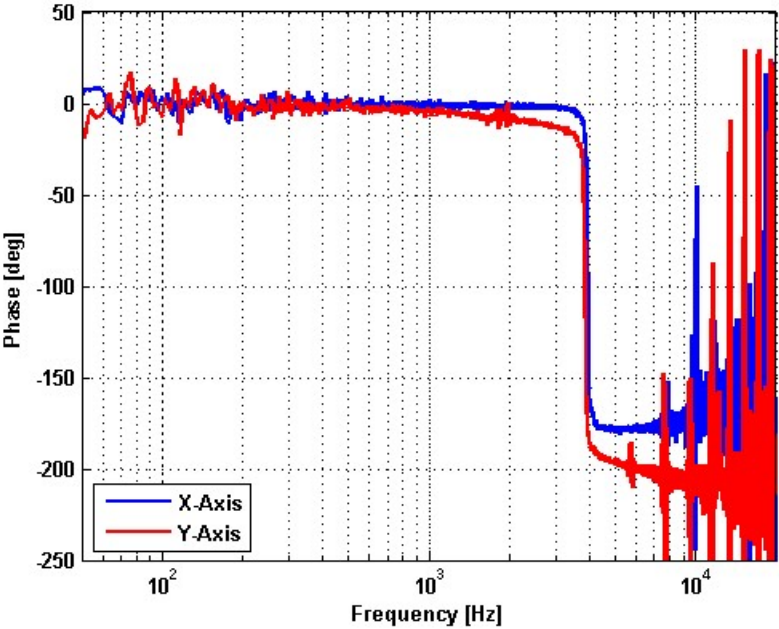


# Frequency Response

## Small Signal Frequency Response - Magnitude



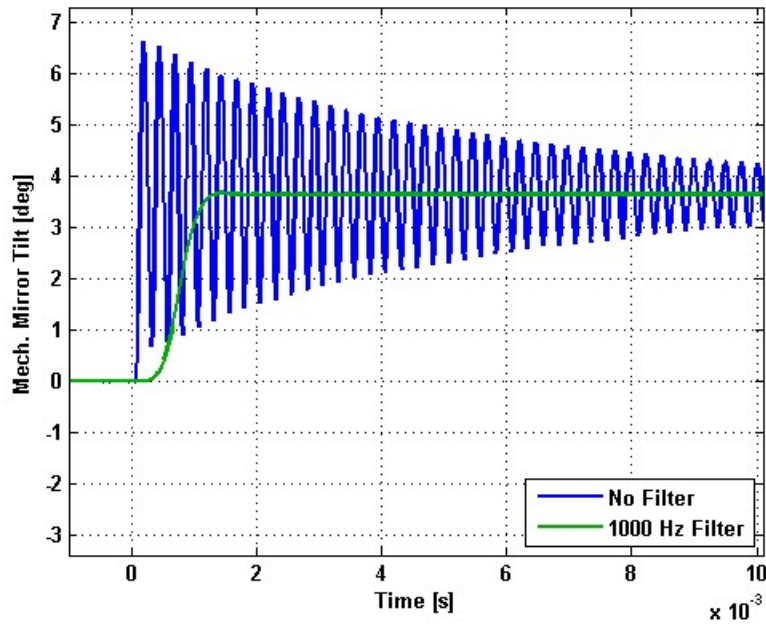
## Small Signal Frequency Response - Phase



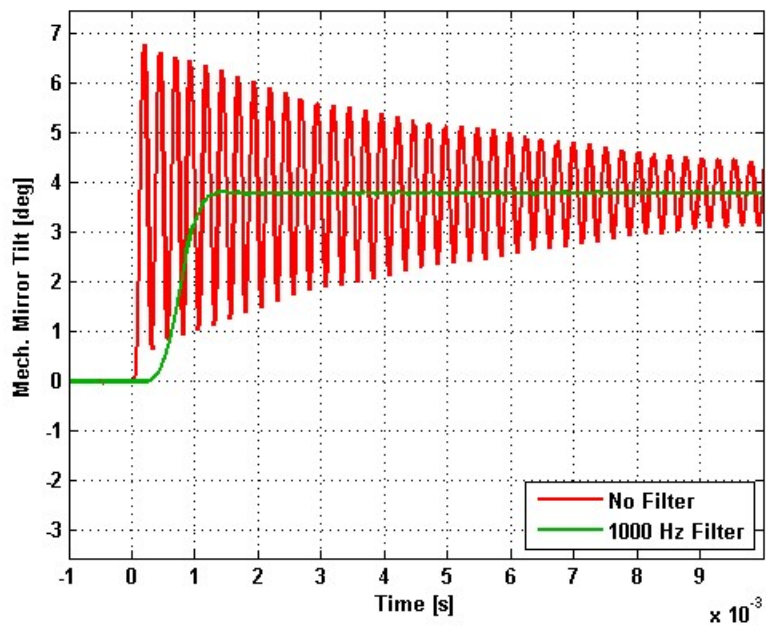
---

# Step Response

## X-Axis Step Response



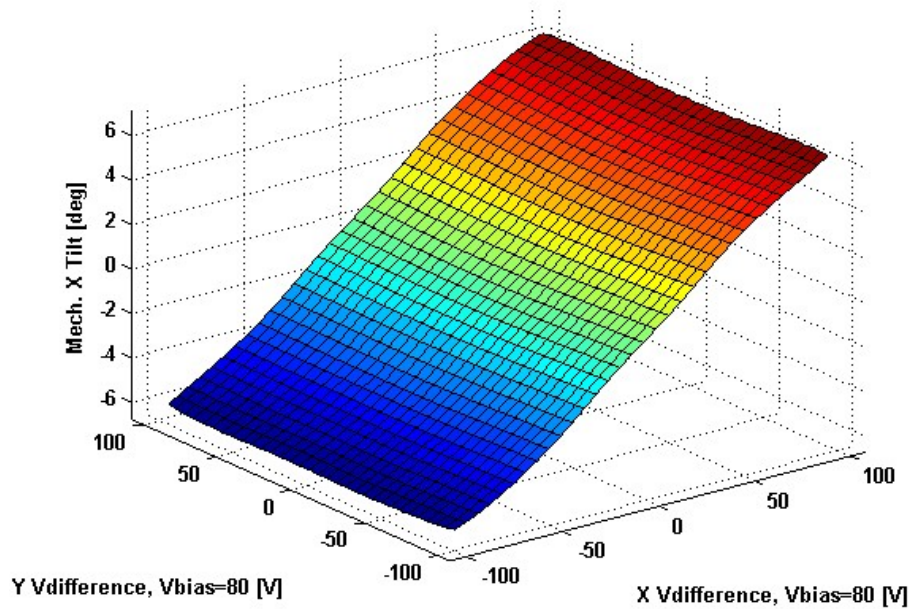
## Y-Axis Step Response



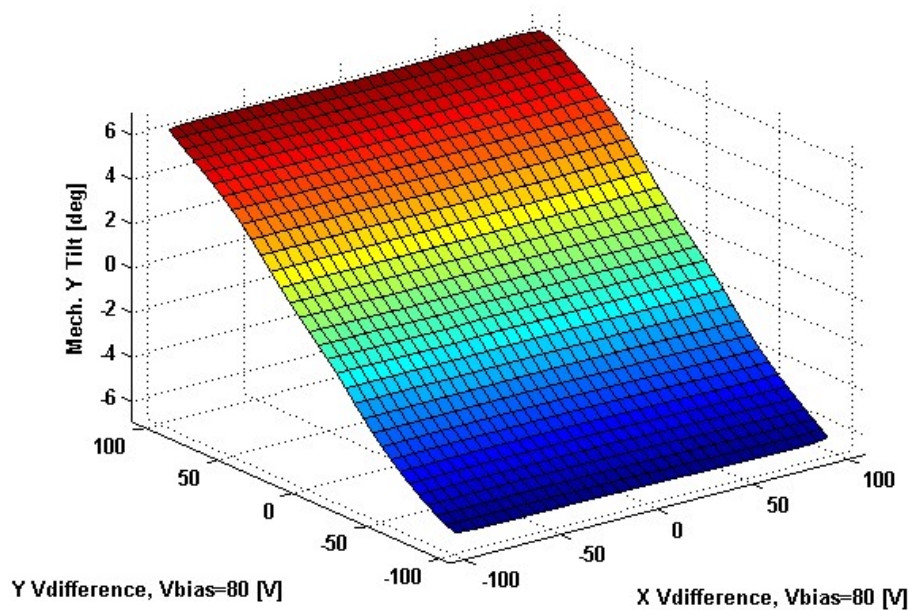
---

# 2D Lookup Tables

## Voltage vs. X Mech. Angle - Lookup Table



## Voltage vs. Y Mech. Angle - Lookup Table



# Y vs. X Tilt - Addressable Mech. Angles

